



**ELASTEC MINING
PRODUCTS BROCHURE**





ABOUT US

Elastec was founded in 1989 to develop and manufacture rubber products for technical applications. AFTER MORE THAN 30 YEARS OF FIELD EXPERIENCE, we are in a comfortable position in the rubber business thanks to the loyalty of our customers and our unbeatable ratio of :

PRICE-QUALITY.

We also provide the **BEST DELIVERY TIME.**



**OVER 30 YEARS OF
FIELD EXPERIENCE**



**OVER 150
SATISFIED CLIENTS**



**WORKING IN MORE THAN
20 COUNTRIES WORLDWIDE**

**Providing the best
rubber mixtures
adapted to the real
working environment**

**Working for the mining
industry and ceramic
plants all over the world**

**Inherited experience of
more than a hundred
years in the market of
rubber products**

**All our installation operators do have the most up
to date safety training and equipment**

**OUR CUSTOMERS
CHOOSE US FOR THE
QUALITY OF OUR
RUBBER LININGS**



WE ARE MANUFACTURERS

We have two manufacturing plants located at La Vall d'Uixó Spain, having over 50.000 square meters and 10 vulcanizing presses and having a productive capacity of over 1.000 tonnes per year.



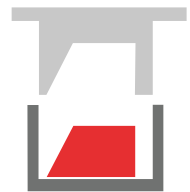
OVER 50.000 M2



10 VULCANIZING PRESSES



OVER 1.000 TN PER YEAR



OWN MOLD WORKSHOP

Rubber linings for ALL TYPES OF BALL MILLS and ALL MANUFACTURERS



SERVICES

**COMPLETE
Ball Mill lining
or SECTOR**

**SPARE PARTS for
EVERY TYPE
OF BALL MILL
and compatible
with ALL
MANUFACTURERS**

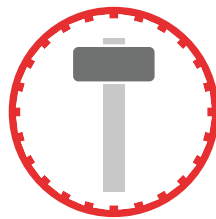
**LINING of
SPECIAL PARTS**

**AG mills
SAG mills
Ball mills**

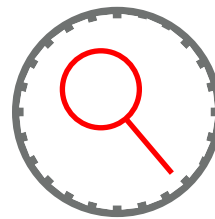
**Wear proof solutions
Discharge tubes
Dump Truck Lining
Chute Lining
Input Trunnions
Other Parts**



**DESIGN AND
MANUFACTURING**



INSTALLATION



INSPECTION



MAINTENANCE

And also:

**"TURN KEY"
projects**

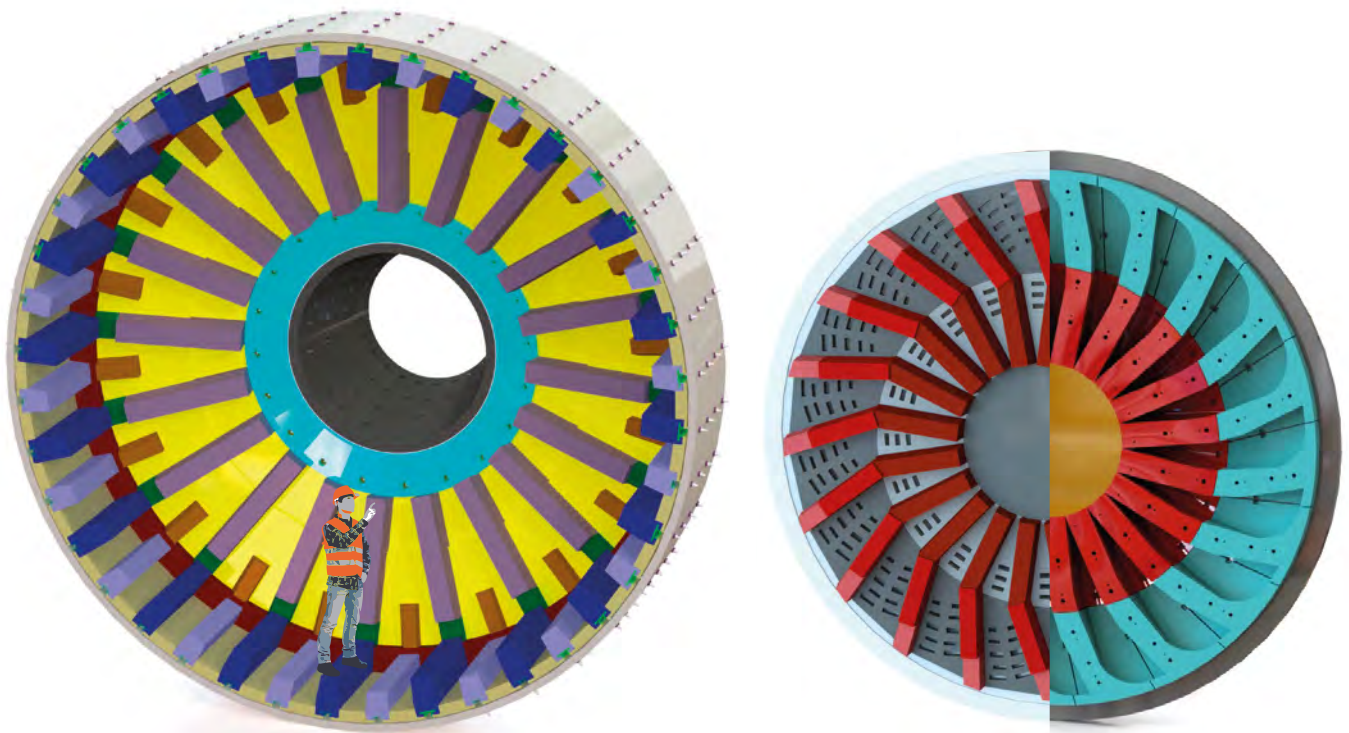
**COMPLETE
technical
assistance**

**Increase of
LIFESPAN
studies**

**TAILOR MADE
designs for each
customer**

ELASTEC'S LININGS

We are specialists in the design, repair and maintenance of rubber linings for ball mills, and since 2010 we have also been manufacturing linings for SAG and AG mills.



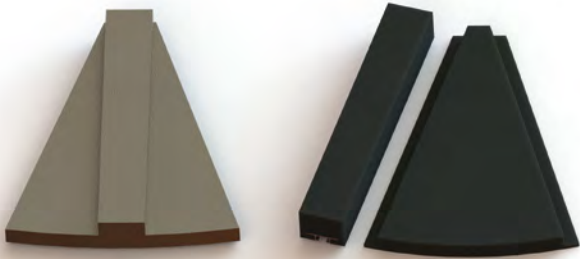
ADVANTAGES OF RUBBER LININGS COMPARED TO STEEL

EASIER TO INSTALL
EASIER TO MODIFY
MINOR OPERATING COST

SHORTER DELIVERY TIMES
LESS NOISE POLLUTION
LESS MAINTENANCE TIMES
LESS WEIGHT AND VOLUME OF THE LINING
NO CONTAMINATION OF THE GRINDED MEDIUM

SUCCESSFUL CASES

**SYSTEM SIMPLIFICATION.
REPLACEMENT OF THE POLYURETHANE PIECE
BY TRIANGLE AND LIFTER**



Cost savings. When it wears out, you just have to change the lifter.

**COMBINATION. USE OF RUBBER LININGS
FOR AREAS OF LESS WEAR**

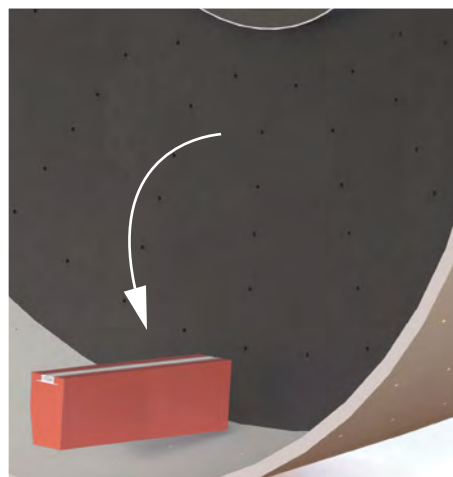
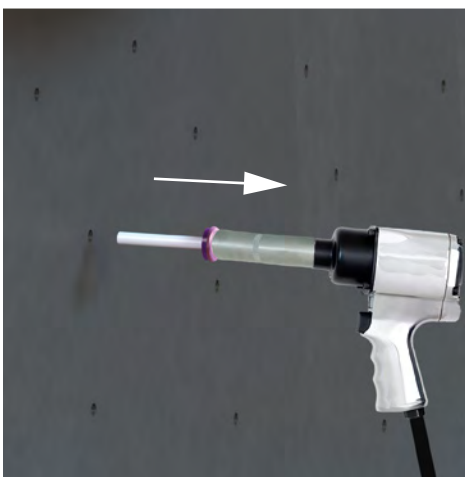


Significant cost reduction

ANCHORAGE SYSTEMS



**In addition to standard
anchoring systems,
we offer
ANCHORS REMOVABLE
FROM THE OUTSIDE
of the mill**



ELASTEC'S RUBBER LINING ELEMENTS

LIFTERBARS

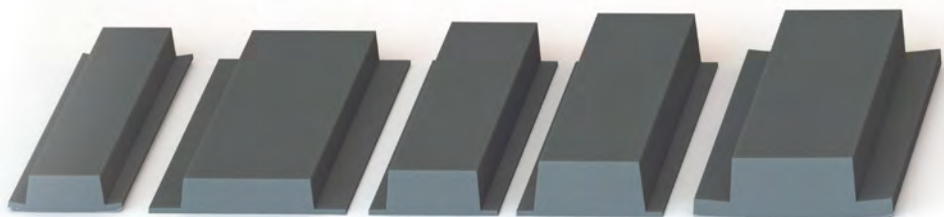
*STEEL
chassis*

Maximum height 500 mm. Maximum width 250 mm.



RUBBER PLATES

Maximum thickness 120 mm. Maximum width 500.

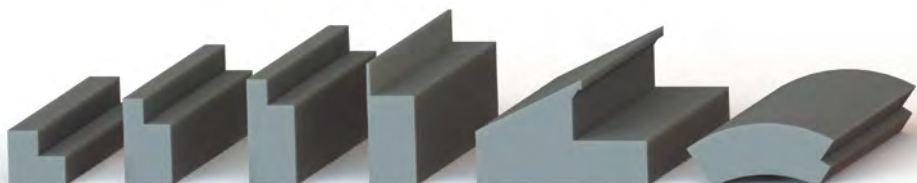


TRIANGLES AND SECTORS

Maximum thickness 120 mm.



PROFILES



**CENTRAL
CAP &
MANHOLE
CAP**



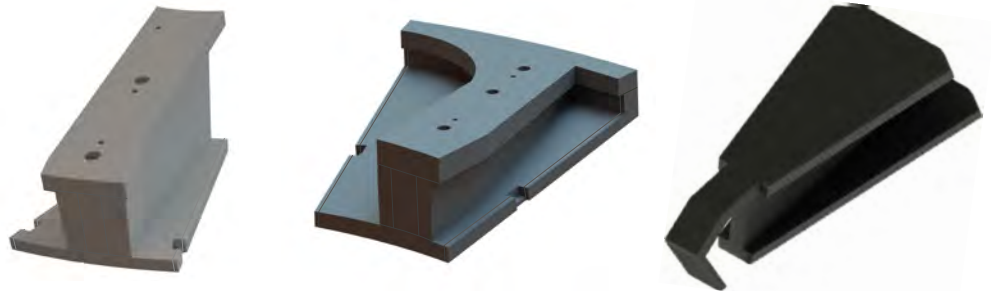
GRATES



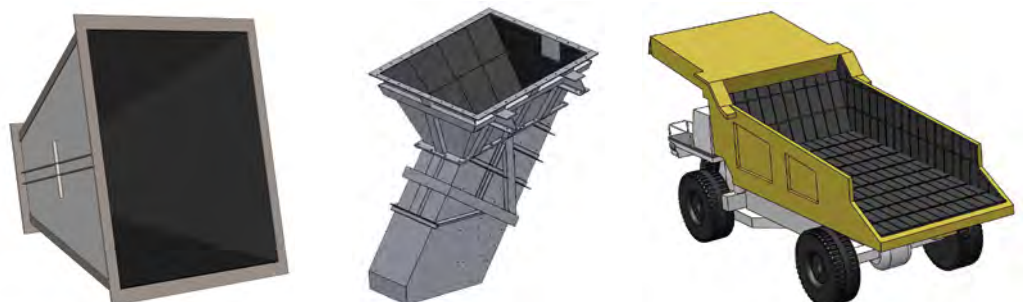
Maximum thickness 120 mm.

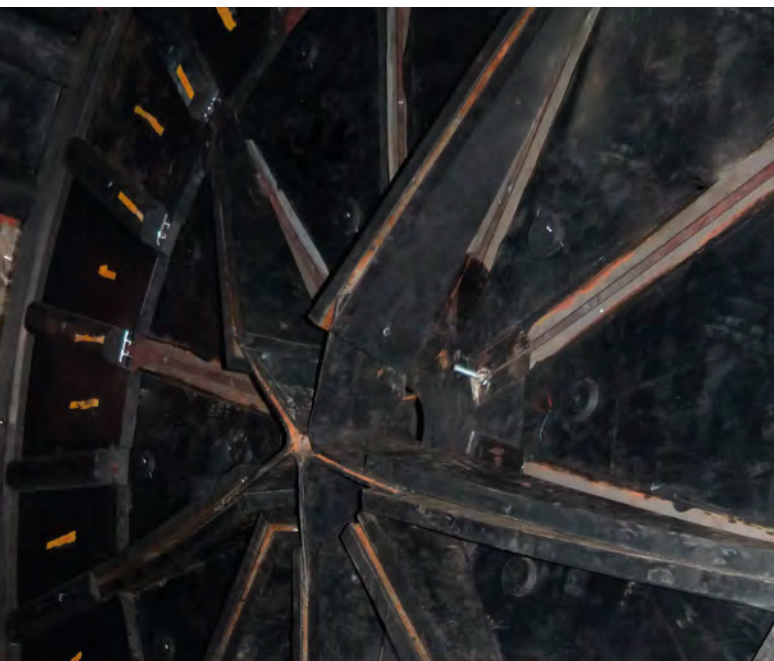
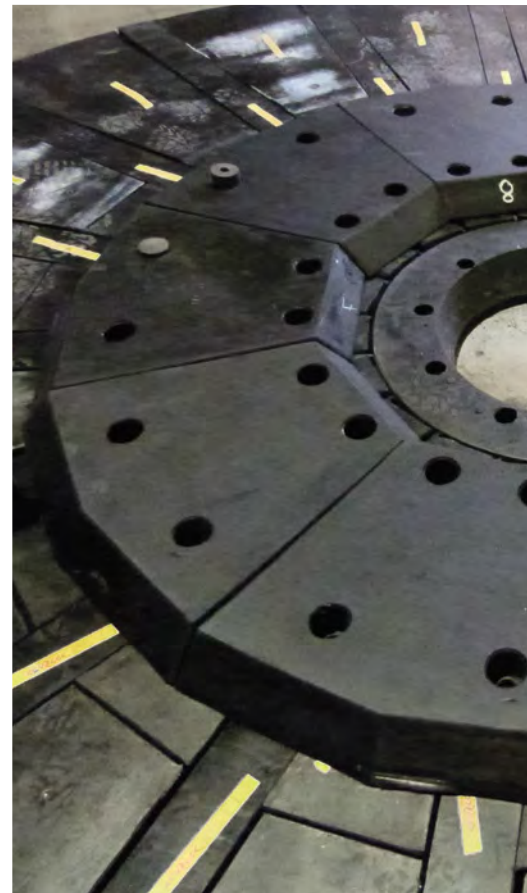
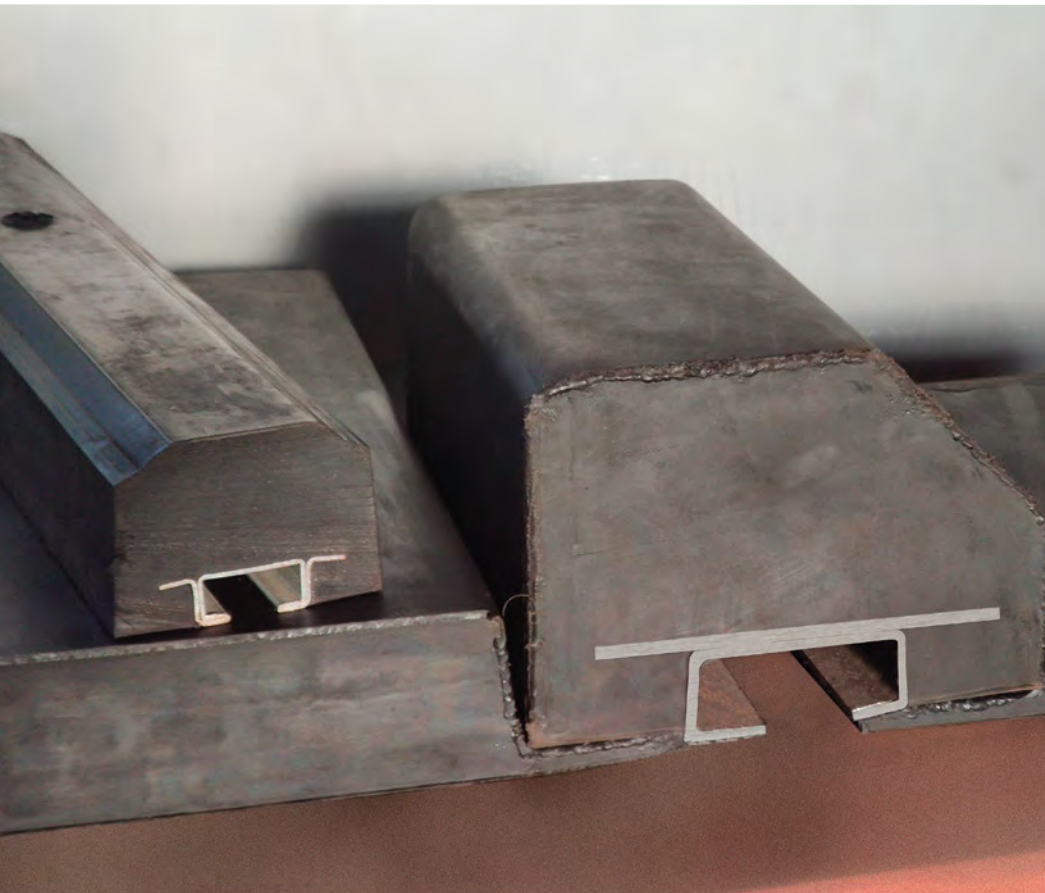
*Designed for
each mill
according to
the needs*

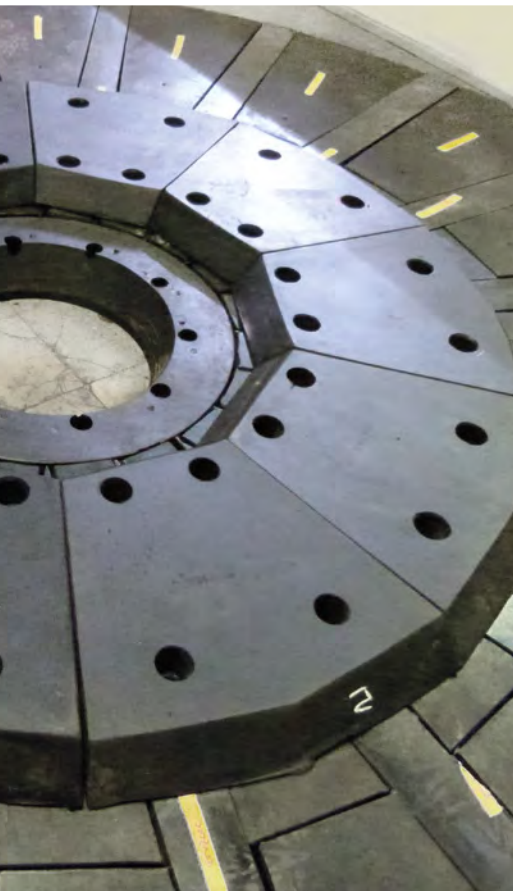
**RUBBER
METAL
STRUCTURES**



**SPECIAL
PARTS**







DISTRIBUTION & CONTACT



www.elastec.es



+34 964 69 11 01



elastec@elastec.es

