



**ELASTEC**

ELASTEC RUBBER SOLUTIONS

**RUBBER LININGS  
FOR BALL MILLS**









# ABOUT US

Elastec was founded in 1989 to develop and manufacture rubber products for technical applications. AFTER MORE THAN 30 YEARS OF FIELD EXPERIENCE, we are in a comfortable position in the rubber business thanks to the loyalty of our customers and our unbeatable ratio of :

**PRICE-QUALITY.**

We also provide the **BEST DELIVERY TIME.**



**OVER 30 YEARS OF  
FIELD EXPERIENCE**



**OVER 150  
SATISFIED CLIENTS**



**WORKING IN MORE THAN  
20 COUNTRIES WORLDWIDE**

**Providing the best  
rubber mixtures  
adapted to the real  
working environment**

**Working for the mining  
industry and ceramic  
plants all over the world**

**Inherited experience of  
more than a hundred  
years in the market of  
rubber products**

**All our installation operators do have the most up  
to date safety training and equipment**

**OUR CUSTOMERS  
CHOOSE US FOR THE  
QUALITY OF OUR  
RUBBER LININGS**



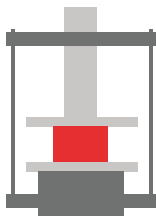


# WE ARE MANUFACTURERS

We have two manufacturing plants located at La Vall d'Uixó Spain, having over 50.000 square meters and 10 vulcanizing presses and having a productive capacity of over 1.000 tonnes per year.



**OVER 50.000 M2**



**10 VULCANIZING PRESSES**



**OVER 1.000 TN PER YEAR**



**OWN MOLD WORKSHOP**

## Rubber linings for ALL TYPES OF BALL MILLS and ALL MANUFACTURERS





# SERVICES

**COMPLETE Ball Mill lining or SECTION**

**SPARE PARTS for EVERY TYPE OF BALL MILL and compatible with ALL MANUFACTURERS**

**LINING of SPECIAL PARTS**

**DRY grinding**

Continuous Mills  
Batch Mills

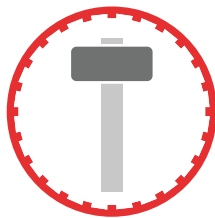
**WET grinding**

Continuous Mills  
Batch Mills  
Modular Mills  
Helical Continuous Ball Mills  
Conical Continuous Ball Mills

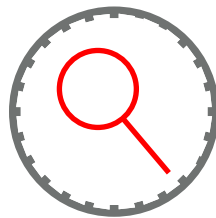
**Wear proof solutions**  
Discharge tubes  
Dump Truck Lining  
Chute Lining  
Input Trunnions  
Other Parts



**DESIGN AND MANUFACTURING**



**INSTALLATION**



**INSPECTION**



**MAINTENANCE**

And also:

**"TURN KEY" projects**

**COMPLETE technical assistance**

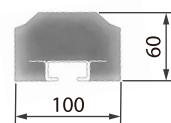
**Increase of LIFESPAN studies**

**TAILOR MADE designs for each customer**

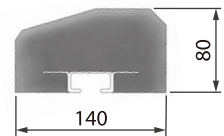


# ELASTEC'S LININGS

## "PR" TYPE LININGS



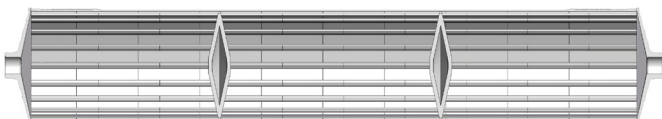
## "PB" TYPE LININGS



\*Dimensions in mm

We have a wide variety of lifter bars and rubber plates to achieve optimum results depending on the needs of our customers.

We have vast experience with **MODULAR MILL LININGS (MMC)**. Modular mills are the standard system on the mining field and the current TREND ON CERAMIC INDUSTRY.



TRADITIONAL CONTINUOUS GRINDING



MODULAR GRINDING

## ADVANTAGES OF MODULAR GRINDING

- Better grinding efficiency
- Higher control of grinding parameters**
- Reduced mechanical problems
- Better adjustment of final product**

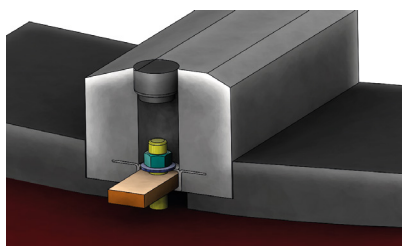
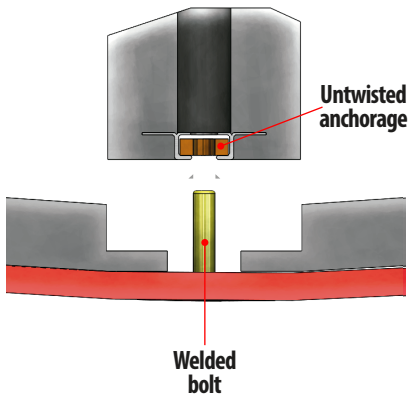
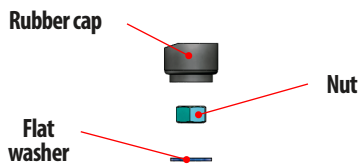
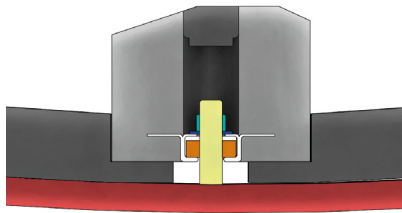


# ANCHORAGE SYSTEMS

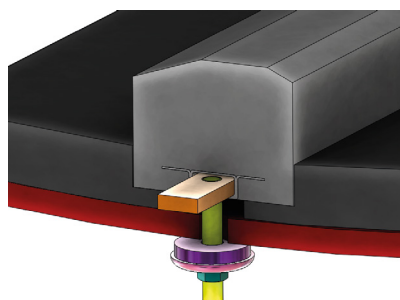
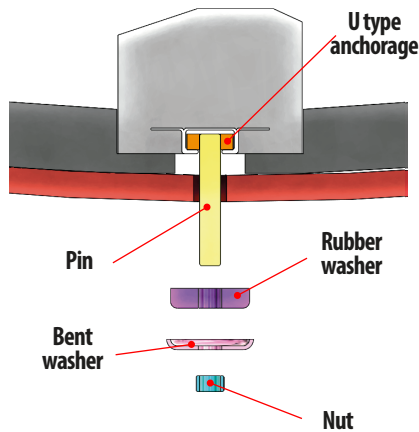
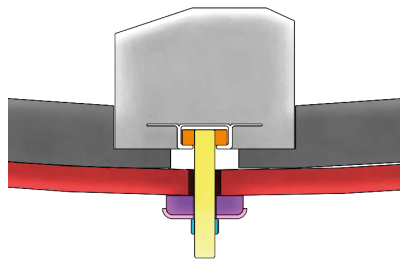
EASY  
ASSEMBLY

Faster  
maintenance,  
LESS  
TROUBLE

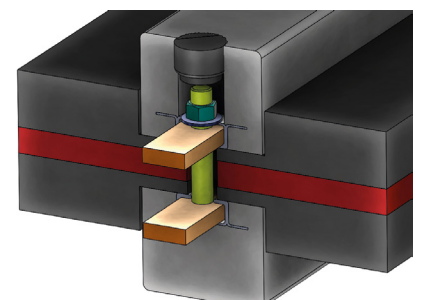
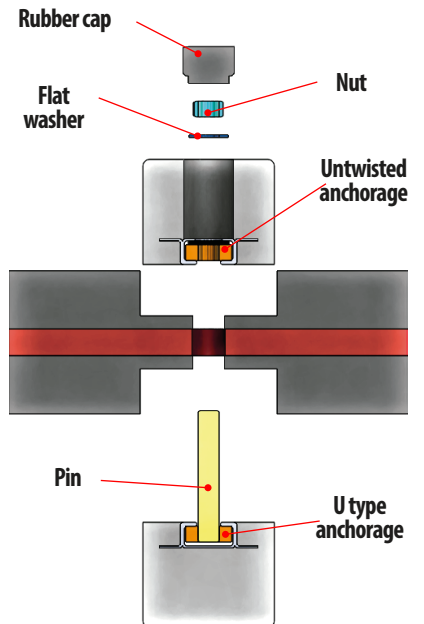
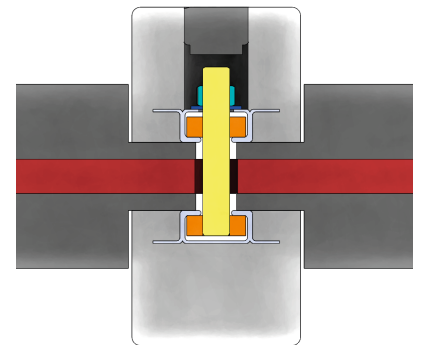
## WELDED BOLT SYSTEM



## THROUGH ANCHORAGE SYSTEM



## COUNTER GRATE SYSTEM







# ELASTEC'S RUBBER LINING ELEMENTS

## LIFTERBARS

Standard length of lifterbars 1320mm

**NON SYMMETRICAL**      **SYMMETRICAL**      **SQUARED LIFTERBARS**

## RUBBER PLATES

Manhole plates are available for every model. Standard length 1320 mm.

**STANDARD**      **METAL REINFORCED**      **WAVE TYPE**

## TRIANGLES AND SECTORS

Available for every number of mill's divisions

**STANDARD**      **NO LIFTER**      **STANDARD**      **REINFORCED**

## PROFILES

**"L" TYPE**      **SQUARED**      **TILTED**      **ROUND CORNER**

# CENTRAL CAP & MANHOLE CAP

Manhole covers available in "caramel" type rubber.



CENTER CAP

SQUARED CAP

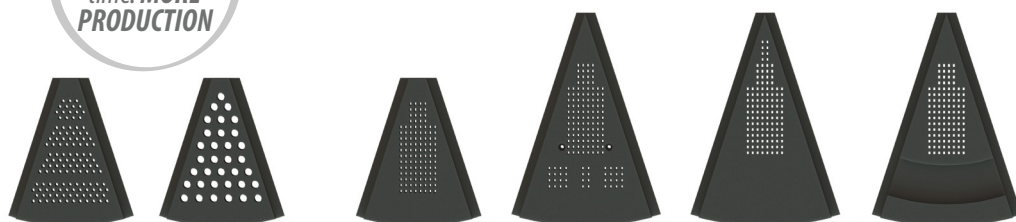
OVAL CAP

SQUARED CAP CARAMEL

# GRATES & COUNTER GRATES

Less obstruction  
Minor breakdown time. **MORE PRODUCTION**

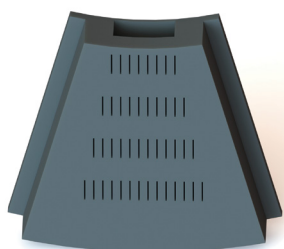
Grates available for each number of divisions, drilling and disposition pattern.



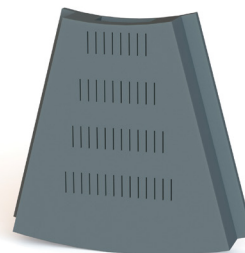
ROUND DRILLS

SQUARED DRILLS

# ELAGRAD



More material flow, **MORE PRODUCTION**



# UNSLIDING BAND ELABAND



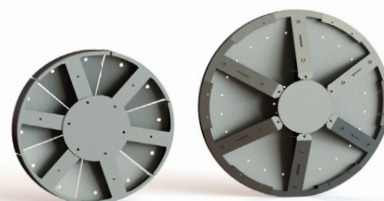
More performance, **LESS COST**



# METAL STRUCTURES

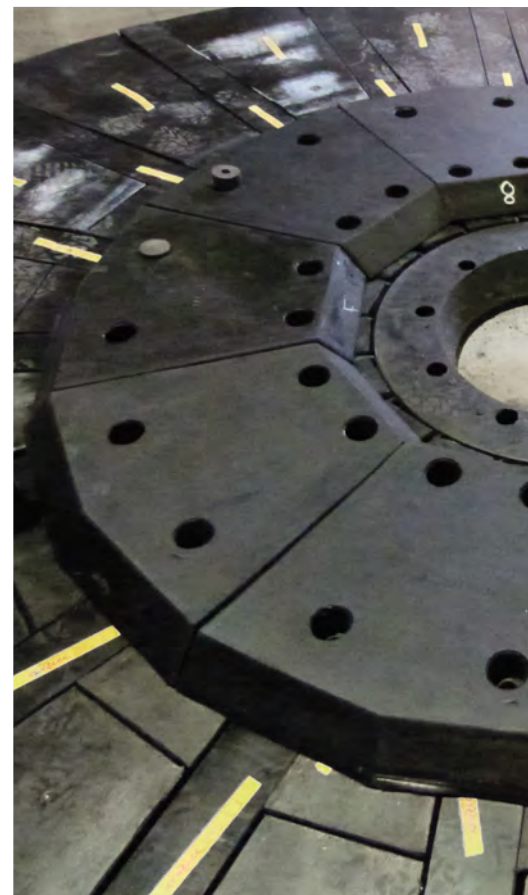


CENTRAL DIAPHRAGM

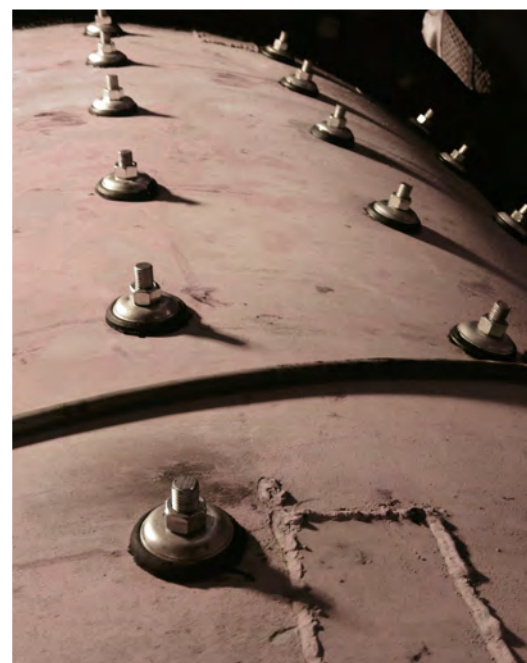
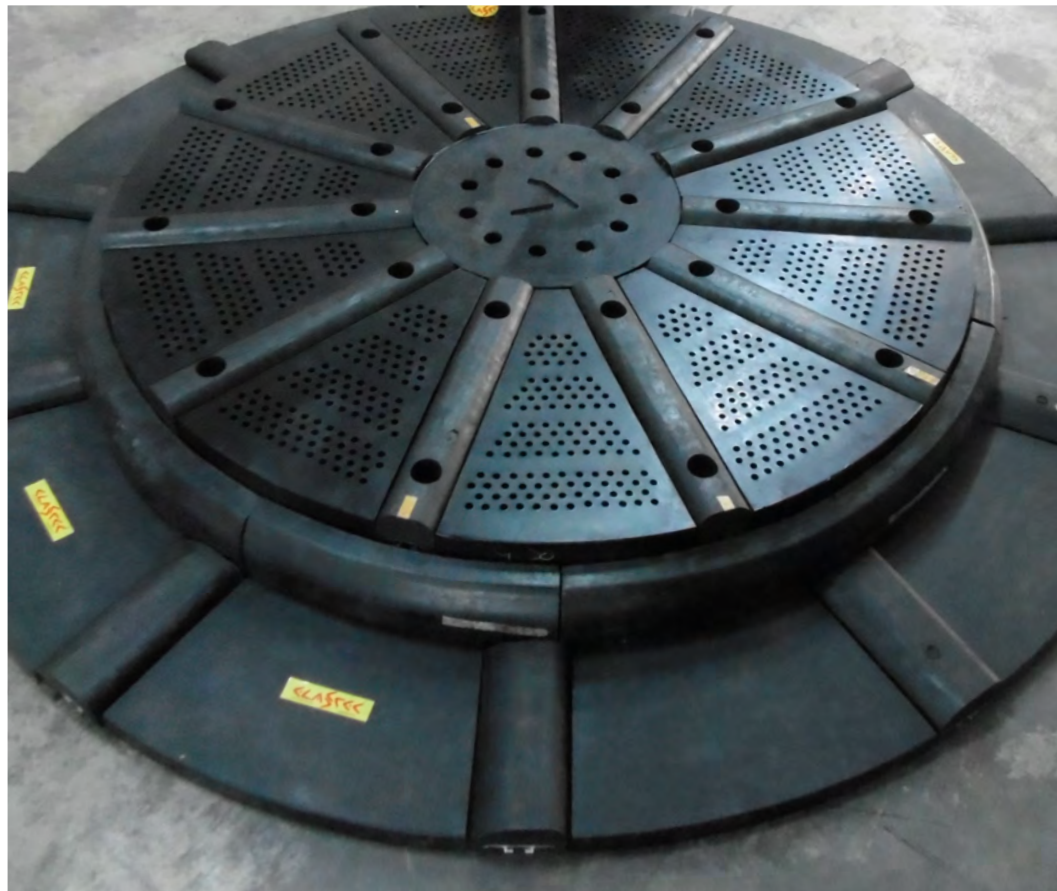
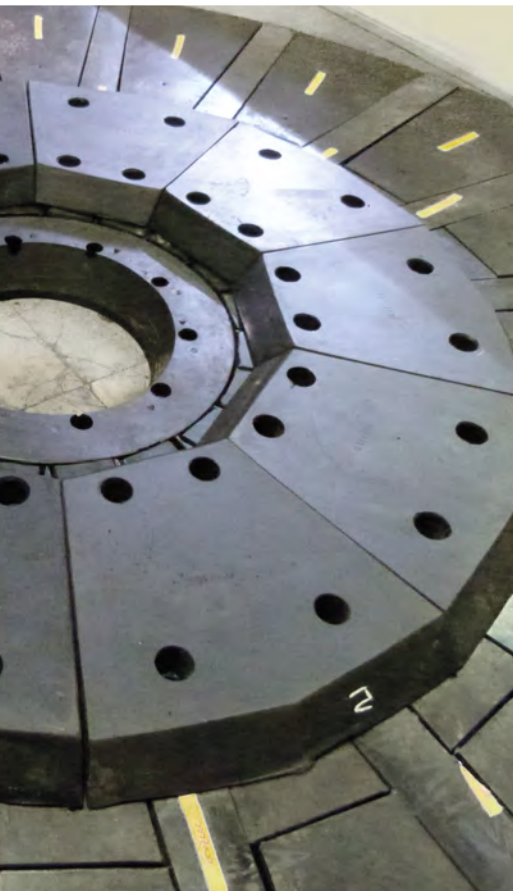


OUTPUT DIAPHRAGM











# DISTRIBUTION & CONTACT



[www.elastec.es](http://www.elastec.es)



+34 964 69 11 01



[elastec@elastec.es](mailto:elastec@elastec.es)

